

WYS WEST  
YORKSHIRE  
SPINNERS LTD

FREE  
PATTERN



OUT OF THE  
*Woods*

CECILIA CARDIGAN  
BY EMMA WRIGHT

# Cecilia

SKILL LEVEL



## FEATURE LEAF LACE CARDIGAN

### MEASUREMENTS

#### To Fit Bust

Small(Medium:Large:XLarge)

#### Actual Chest

88(102:116:130)cm, (34.5[40:45.75:51]in)

#### Full Length

56(61:62:66)cm, (22[24:24.5:26]in)

#### Sleeve Length

40.5(43:45.5:48.5)cm, (16[17:18:19]in)

### MATERIALS

#### YARN

West Yorkshire Spinners - Illustrious DK  
Claret (508) 4[5:5:6] x 100g balls

#### NEEDLES

4mm (US 6) Straight needles  
4mm (US 6) Circular knitting needles (Optional)

### TENSION

21 sts x 29 rows to 10cm/4in over Woven Stitch pattern  
using 4mm (US 6) needles.

25 sts x 27 rows to 10cm/4in over Leaf Lace pattern  
using 4mm (US 6) needles.

PLEASE CHECK YOUR TENSION AS IT IS ESSENTIAL TO  
ACHIEVE THIS TENSION IN ORDER TO ACHIEVE SUCCESS.

### PATTERN NOTES

The pattern suggests using a circular needle due to  
the number of stitches cast on for the back. If using  
circular needle work backwards and forwards as if  
on straight needles.

### ABBREVIATIONS

k	knit
p	purl
cm	centimetre
cont	continue
foll	follows/following
g-st	garter stitch (every row knit)
in	inch/es
inc	increase
k3tog	knit three stitches together (decrease 2)
patt	pattern
rep	repeat
RS/WS	right side/wrong side
sk2po	slip one, knit two together
sl1p	slip one stitch purlwise
st/s	stitch/es
st	stocking stitch
tog	together
yb	take yarn to back
yf	yarn forward
yo	yarn over





## BACK

Using 4mm (US 6) needles, cast on 109(127:145:163)sts.

Knit 4 rows in g-st.

Now work Leaf Lace pattern as folls:

**Row 1 (RS):** P1, \* k4, k3tog, yo, k1, yo, p1, yo, k1, yo, sk2po, k4, p1; rep from \* to end.

**Row 2 (WS):** (K1, p8) to last st, k1.

**Row 3:** P1, \* k2, k3tog, (k1, yo) twice, k1, p1, k1, (yo, k1) twice, sk2po, k2, p1; rep from \* to end.

**Row 4:** As Row 2.

**Row 5:** P1, \* k3tog, k2, yo, k1, yo, k2, p1, k2, yo, k1, yo, k2, sk2po, p1; rep from \* to end.

**Row 6:** As Row 2.

These 6 rows form Leaf Lace patt.

Cont as set until work measures 56(61:62:66)cm, (22[24:24.5:26]in) ending with **WS** facing for next row.

Cast off knit-wise on **WS**.

## LEFT FRONT

Using 4mm (US 6) needles, cast on 55(61:69:77)sts.

Knit 4 rows in g-st. \*\*

Now work Woven St patt as folls:

**Row 1 (RS):** K1, (yf, sl1P, yb, k1) to last 2 sts, k2.

**Row 2:** K3, purl to end.

**Row 3:** K2, (yf, sl1P, yb, k1) to last st, k3 sts, k3.

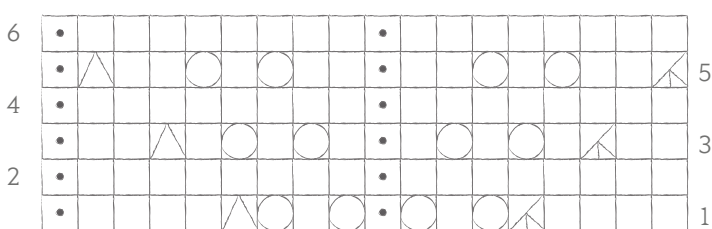
**Row 4:** K3, purl to end.

These 4 rows form Woven St patt.

Cont as set until work measures 56(61:62:66)cm, (22[24:24.5:26]in) or until work measures same as Back ending with **WS** facing for next row.

Cast off knit-wise on **WS**.

## CHART



Read all RS (odd) rows from R to L  
Read all WS (even) rows from L to R

## RIGHT FRONT

Work as for Left Front to \*\*

Now work Woven St patt as folls:

**Row 1 (RS):** K3, (yf, sl1P, yb, k1) to end.

**Row 2:** Purl to last 3 sts, k3.

**Row 3:** K4, (yf, sl1P, yb, k1) to last st, k1.

**Row 4:** Purl to last 3 sts, k3.

These 4 rows form Woven St patt.

Cont as set until work measures 56(61:62:66)cm, (22[24:24.5:26]in) or until work measures same as Back ending with **WS** facing for next row.

Cast off knit-wise on **WS**.

## SLEEVES (BOTH ALIKE)

Using 4mm (US 6) needles, cast on 55(59:63:67)sts.

Knit 4 rows in g-st.

Now work Woven St patt as folls:

**Row 1 (RS):** K1, (yf, sl1P, yb, k1) to end.

**Row 2:** Purl.

**Row 3:** K2, (yf, sl1P, yb, k1) to last st, k1.

**Row 4:** Purl.

These 4 rows form Woven St patt.

Cont as set keeping in patt at the same time inc 1 st at each end of next and 9 foll 10(12:12:12)th rows. 75(79:83:87)sts.

Cont without shaping until work measures 40.5(43:45.5:48.5)cm, (16[17:18:19]in) ending with **WS** facing for next row.

Cast off knit-wise on **WS**.

## MAKING UP

Block garment pieces using preferred method.

Construct garment as folls:

**Join shoulder:** Lay Back flat and pin each Front in place (using photograph as a guide) overlapping both Fronts approx 6cm (**2.5in**). Mark 18(19:20:21)cm, (7[7.5:8:8.25]in) down either side of shoulder seams and sew cast off edge of each Sleeve inside markers. Begin at garment hem, sew side seams using mattress stitch or back stitch if preferred continuing down Sleeve seams. Fasten off any loose ends.

## KEY

- K on RS, p on WS
- P on RS, k on WS
- k3tog
- yo
- sk2po



## WEST YORKSHIRE SPINNERS



UNIT 2, AIREDALE PARK, ROYD INGS AVENUE, KEIGHLEY, WEST YORKSHIRE BD21 4DG

**TEL:** (0)1535 664500 **EMAIL:** SALES@WYSPINNERS.COM **WWW.WYSPINNERS.COM**

Please note that all quantities in this book are based on average usage and therefore are approximate.  
We cannot accept responsibility for the finished garment if any other yarn than the one specified is used.

Although every effort had been made to ensure that instructions are correct, West Yorkshire Spinners cannot accept any liabilities. Owing to photography and printing restrictions the colour reproduction is matched as closely as possible to the yarn.