

WYS WEST  
YORKSHIRE  
SPINNERS LTD



EXQUISITE SHAWLETTE

DESIGNED BY ANNIKEN ALLIS







# EXQUISITE

80% FALKLAND WOOL 20% MULBERRY SILK

## EXQUISITE SHAWLETTE - BY ANNIKEN ALLIS

### DESIGNER'S COMMENT

This square shawl is worked in the round from the centre out.

### MATERIALS

#### West Yorkshire Spinners Exquisite Lace

(80% Falkland Island Wool/20% Silk; 800m per 100g)

Shade 258: Florence x 1 Hank

3.5mm (UK 9-10/US 4) circular needle, 40cm (16in) length

3.5mm (UK 9-10/US 4) circular needle, 80cm (32in) length

3.5mm (UK 9-10/US 4) double pointed needles (DPNs), set of 5  
4 stitch markers

### TWO SIZE'S

84 x 84 (108 x 108)cm/33 x 33 (42½ x 42½) in square

### TENSION

15 sts and 29 rows to 10cm (4in) over Chart B, after blocking.

### ABBREVIATIONS

k	knit
k2tog	knit 2 stitches together
LH	left hand
ndl(s)	needle(s)
patt	pattern
rep	repeat
sk2po	slip 1 st, k2tog, pass slipped st over
ssk	slip one st knitwise, slip next st knitwise, insert left needle into front of both sts and knit together
st(s)	stitch(es)
tbl	through back loop
yo	yarn over (yarn forward)

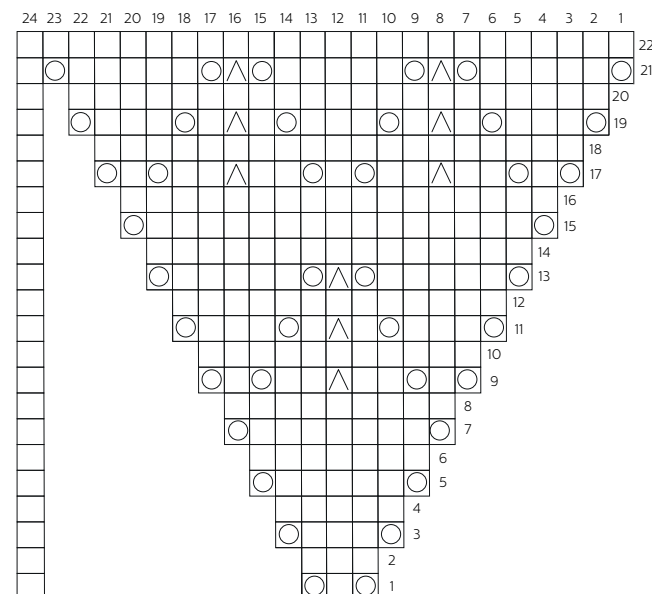
### RUSSIAN CAST OFF

K2, \*slip both sts back to LH ndl, k2tog tbl, k1; rep from \* to end.

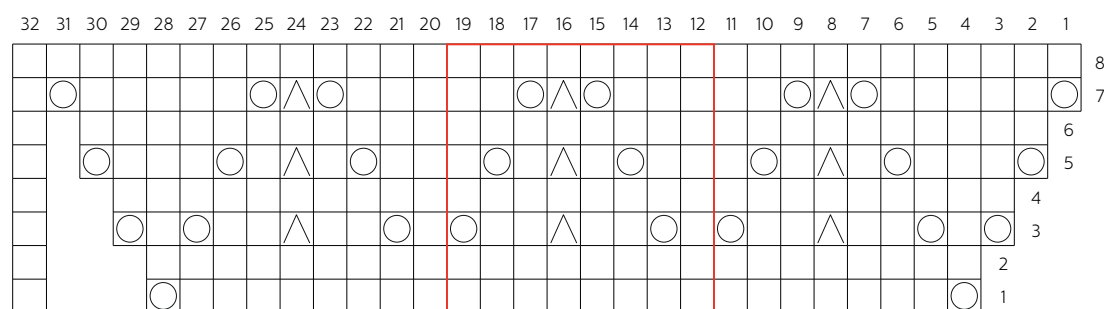
### STITCH PATTERN

KEY						
	Knit	yo	k2tog	ssk	sk2po	pattern repeat

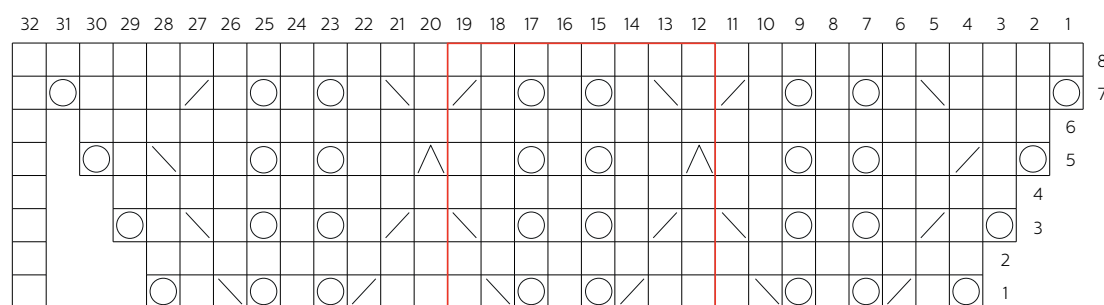
### CHART A



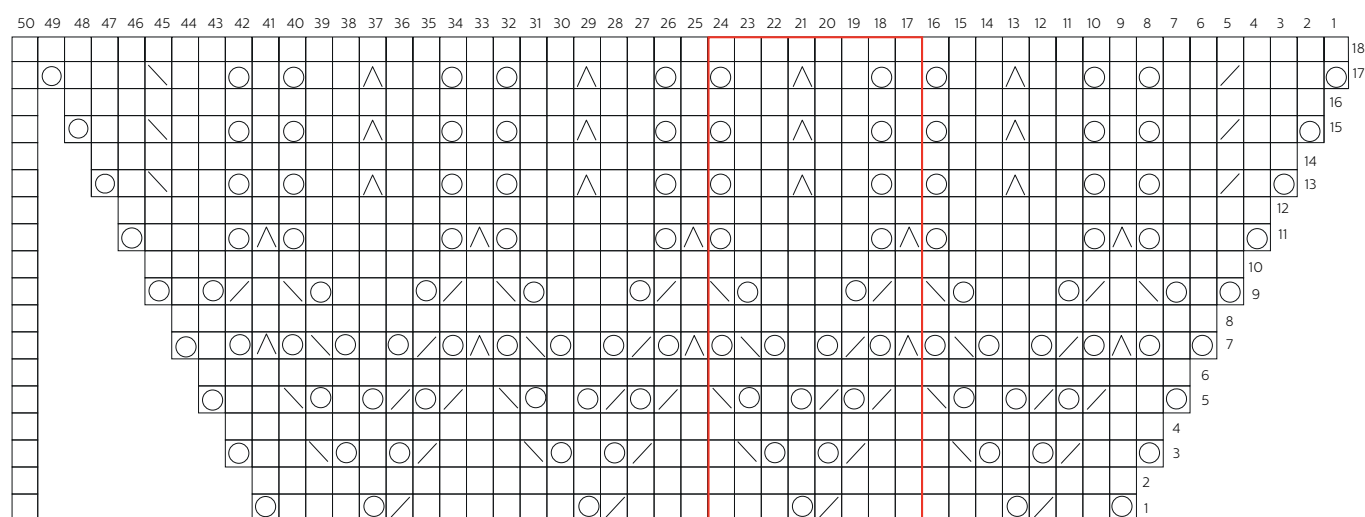
# CHART B



# CHART C



# CHART D



# CHART A

Round 1: (Yo, k1) twice.

Round 2 & all even-numbered rounds: K.

Round 3: Yo, k3, yo, k1.

Round 5: Yo, k5, yo, k1.

Round 7: Yo, k7, yo, k1.

Round 9: Yo, k1, yo, k2, sk2po, k2, (yo, k1) twice.

Round 11: Yo, k3, yo, k1, sk2po, k1, yo, k3, yo, k1.

Round 13: Yo, k5, yo, sk2po, yo, k5, yo, k1.

Round 15: Yo, k15, yo, k1.

Round 17: (Yo, k1, yo, k2, sk2po, k2) twice, (yo, k1) twice.

Round 19: (Yo, k3, yo, k1, sk2po, k1) twice, yo, k3, yo, k1.

Round 21: (Yo, k5, yo, sk2po) twice, yo, k5, yo, k1.

# CHART B

Pattern repeat is indicated by [square brackets].

Note: See pattern for how many repeats to work.

Round 1: Yo, k7, [k8], k8, yo, k1.

Round 2 & all even-numbered rounds: K.

Round 3: Yo, k1, yo, k2, sk2po, k2, yo, [k1, yo, k2, sk2po, k2, yo], k1, yo, k2, sk2po, k2, (yo, k1) twice.

Round 5: Yo, k3, yo, k1, sk2po, k1, yo, k1, [k2, yo, k1, sk2po, k1, yo, k1], k2, yo, k1, sk2po, k1, yo, k3, yo, k1.

Round 7: Yo, k5, yo, sk2po, yo, k2, [k3, yo, sk2po, yo, k2], k3, yo, sk2po, yo, k5, yo, k1.

# CHART C

Pattern repeat is indicated by [square brackets].

Note: See pattern for how many repeats to work.

Round 1: Yo, k1, k2tog, yo, k1, yo, ssk, k1, [k2, k2tog, yo, k1, yo, ssk, k1], k2, k2tog, yo, k1, yo, ssk, k1, yo, k1.

Round 2 & all even-numbered rounds: K.

Round 3: Yo, k1, k2tog, (k1, yo) twice, k1, ssk, [k1, k2tog, (k1, yo) twice, k1, ssk], k1, k2tog, (k1, yo) twice, k1, ssk, k1, yo, k1.

Round 5: Yo, k1, k2tog, k2, yo, k1, yo, k2, [sk2po, k2, yo, k1, yo, k2], sk2po, k2, yo, k1, yo, k2, ssk, k1, yo, k1.

Round 7: Yo, k3, ssk, (k1, yo) twice, k1, k2tog, [k1, ssk, (k1, yo) twice, k1, k2tog], k1, ssk, (k1, yo) twice, k1, k2tog, k3, yo, k1.



## CHART D

Pattern repeat is indicated by [square brackets].

**Note:** See pattern for how many repeats to work.

**Round 1:** Yo, k2, k2tog, yo, k3, [k3, k2tog, yo, k3], k3, k2tog, yo, k6, k2tog, yo, k3, yo, k1.

**Round 2 & all even-numbered rounds:** K.

**Round 3:** Yo, k2, k2tog, yo, k1, yo, ssk, k1, [k2, k2tog, yo, k1, yo, ssk, k1], k2, k2tog, yo, k1, yo, ssk, k3, k2tog, yo, k1, yo, ssk, k2, yo, k1.

**Round 5:** Yo, k2, (k2tog, yo) twice, k1, yo, ssk, [k1, (k2tog, yo) twice, k1, yo, ssk], (k1, (k2tog, yo) twice, k1, yo, ssk) twice, k2, yo, k1.

**Round 7:** Yo, k1, yo, sk2po, yo, k2tog, yo, k1, yo, ssk, yo, [sk2po, yo, k2tog, yo, k1, yo, ssk, yo], (sk2po, yo, k2tog, yo, k1, yo, ssk, yo) twice, sk2po, (yo, k1) twice.

**Round 9:** Yo, k1, yo, ssk, k1, k2tog, yo, k3, yo, ssk, [k1, k2tog, yo, k3, yo, ssk], (k1, k2tog, yo, k3, yo, ssk) twice, k1, k2tog, (yo, k1) twice.

**Round 11:** Yo, k3, yo, sk2po, yo, k5, yo, [sk2po, yo, k5, yo], (sk2po, yo, k5, yo) twice, sk2po, yo, k3, yo, k1.

**Round 13:** Yo, k1, k2tog, k2, yo, k1, yo, k2, sk2po, k2, yo, [k1, yo, k2, sk2po, k2, yo], (k1, yo, k2, sk2po, k2, yo) twice, k1, yo, k2, ssk, k1, yo, k1.

**Round 15:** Yo, k2, k2tog, k2, yo, k1, yo, k2, sk2po, k2, yo, [k1, yo, k2, sk2po, k2, yo], (k1, yo, k2, sk2po, k2, yo) twice, k1, yo, k2, ssk, k2, yo, k1.

**Round 17:** Yo, k3, k2tog, k2, yo, k1, yo, k2, sk2po, k2, yo, [k1, yo, k2, sk2po, k2, yo], (k1, yo, k2, sk2po, k2, yo) twice, k1, yo, k2, ssk, k3, yo, k1.

## PATTERN NOTES

As the shawl gets bigger and the number of stitches increases, you will need to change from DPNs to the shorter circular needle then on to the longer circular needle in order to work comfortably.

The shawl is worked in quarters. Work the specified chart once over each quarter and place a stitch marker between each quarter as you change onto the circular needle to help keep track of the chart repeats.

From Chart B onwards you will work repeats of the 8-stitch repeat (indicated by a red outline or square brackets) within each quarter.

## PATTERN

**Please ensure you have read the pattern notes before casting on.**

Using DPNs (or circular needles and the magic loop technique if preferred), cast on 8 sts and divide them evenly over 4 DPNs. Join to work in the round and place a marker to indicate beginning of round.

Knit 1 round.

## COMMENCE CHART A

**Round 1:** Work round 1 of chart A four times. 8 sts inc

**Round 2:** Work round 2 of chart A four times (Knit all sts to end).

**Round 3:** Work round 3 of chart A four times. 8 sts inc

Continue as set working all 22 rounds of chart A once. 96 sts

## COMMENCE CHART B

**Round 1:** Work round 1 of chart B, working the 8 st rep once in each section, four times. 8 sts inc

**Round 2:** Work round 2 of chart B, working the 8 st rep once in each section, four times (Knit all sts to end).

**Round 3:** Work round 3 of chart B, working the 8 st rep once in each section, four times. 8 sts inc

Continue as set working all 8 rounds of chart B a total of 5 (7) times. For each subsequent 8 row rep, work an additional 8 st rep in each section. 256 (320) sts.

## COMMENCE CHART C

**Round 1:** Work round 1 of chart C, working the 8 st rep

6 (8) times in each section, four times. 8 sts inc

**Round 2:** Work round 2 of chart C, working the 8 st rep 6 (8) times in each section, four times (Knit all sts to end).

**Round 3:** Work round 3 of chart C, working the 8 st rep 6 (8) times in each section, four times. 8 sts inc

Continue as set working all 8 rounds of chart C a total of 6 (8) times. For each subsequent 8 row rep, work an additional 8 st rep in section. 448 (576) sts.

## COMMENCE CHART D

**Round 1:** Work round 1 of chart D, working the 8 st rep 11 (15) times in each section, four times. 8 sts inc

**Round 2:** Work round 2 of chart D, working the 8 st rep 11 (15) times in each section, four times (Knit all sts to end).

**Round 3:** Work round 3 of chart D, working the 8 st rep 11 (15) times in each section, four times. 8 sts inc

Continue as set working all 18 rounds of chart D once. 520 (648) sts.

Cast off using the Russian Cast Off or another very stretchy cast off method.

## FINISHING

Weave in all loose ends. Soak shawl in lukewarm water.

Squeeze out excess water in a towel. Lay the shawl on a flat surface and stretch to size and shape, carefully pinning it in place. Leave to dry thoroughly before removing pins.



WEST YORKSHIRE SPINNERS



Tel: +44 (0)1535 664500 | Email: [sales@wyspinners.com](mailto:sales@wyspinners.com) | Website: [www.wyspinners.com](http://www.wyspinners.com)

Made in Yorkshire, West Yorkshire Spinners. Keighley, England